



Partnering for impact with Australian industry

Supporting industry with data access

The Atlas of Living Australia (ALA) is Australia's national biodiversity data infrastructure. It allows industry, researchers, decision-makers and the community to contribute, access and analyse data on Australia's plants, animals and fungi. The ALA is partnering with industry to leverage the power of biodiversity data and infrastructure to support business processes, and innovation and realise improved biodiversity outcomes for Australia.

As a one-stop shop for Australia's biodiversity data, the ALA is an important gateway for streamlining workflows for environmental planners, consultants, and other industries. With more than **131 million native and invasive species occurrence records**, the ALA supports industry by providing the following data and services:

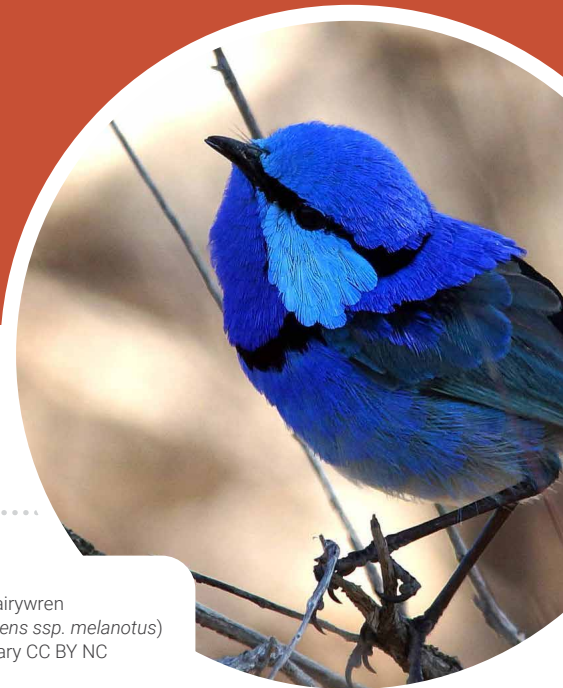
- **threatened species** lists for each state and territory
- **sensitive species** lists
- **spatial mapping tools**
- **data quality assessment tools** and more.

Working with more than **850 data providers**, the ALA supports biodiversity data exchange, making biodiversity data from government, research, community and industry widely accessible to create a more detailed picture of Australia's biodiversity.

Gateway to global data

In 2022, the ALA partnered with Geopacific Resources Limited to mobilise more than **3,600 species occurrence records** collected from the Woodlark Gold Mining Project in Papua New Guinea. These records were collected to support industry alignment with Equator Principles - a risk management framework for determining, assessing and managing environmental and social risk in projects that can be adopted by financial institutions. As the Australian node of the Global Biodiversity Information Facility (GBIF), the ALA works with data partners to make data collected from Australia and the Pacific region **accessible around the world**.

Scan the QR code to learn more about the Equator Principles.



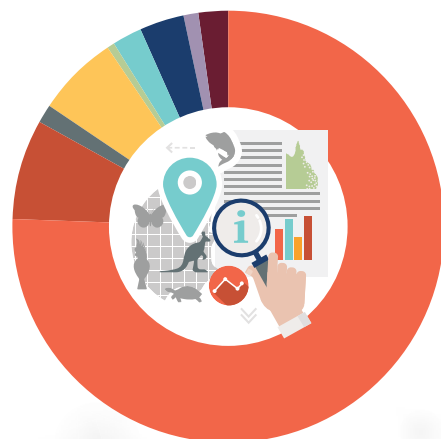
» Black-backed Fairywren
(*Malurus splendens ssp. melanotus*)
© Ellura Sanctuary CC BY NC

Over **50% of companies** recently surveyed said **that the ALA was essential to their business**, with more than 1,100 staff from 500 businesses using the ALA regularly.

Australian businesses using the ALA

Over 70% of the businesses that currently use the ALA are small to medium businesses. The largest industry sectors accessing data within the ALA are environmental consultants, agricultural, forestry and horticulture and mining sectors, primarily to support environmental planning activities (such as accessing threatened species information).

ALA usage by industry sector



- Professional Consultants
- Mining & Energy
- Fashion, Design, Art & Entertainment
- Agriculture, Forestry & Horticulture
- Green Energy
- Technology
- Infrastructure
- Publications & Mapping
- Other

Environmental impact assessments

The ALA plays a crucial role in supporting environmental impact assessments and approvals under the Environment Protection and Biodiversity Conservation Act 1999 (EPBC Act). By providing comprehensive and up-to-date biodiversity data, the ALA provides baseline information for evidence-based decision-making by consultants and government agencies to make informed decisions about potential impacts on Australia's unique biodiversity.

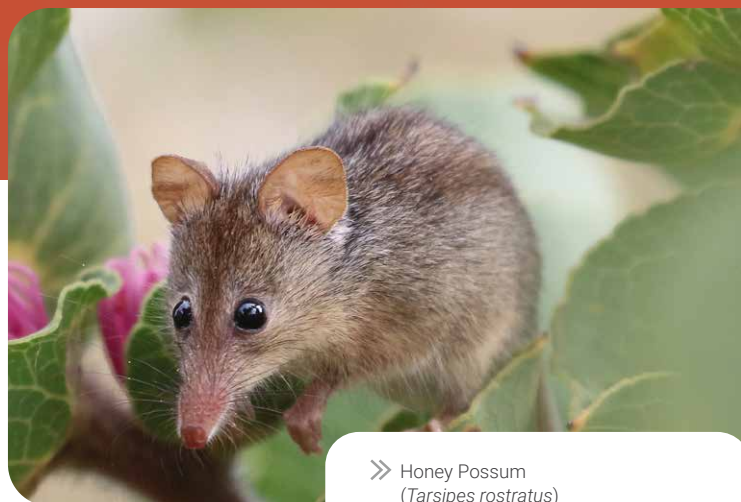
The ALA's extensive collection of species occurrence records, **spatial maps**, and **data tools** can be used to identify and assess the importance of species occurrences potential impacts on matters of national environmental significance, protected under the EPBC Act. This information can inform the design of environmental impact assessments, identify mitigation measures, and support the development of environmental policies.

Index of Biodiversity Surveys for Assessments (IBSA)

The Index of Biodiversity Surveys for Assessments (IBSA) is an online portal that provides access to biodiversity survey data in Western Australia (WA). It was launched in 2018 by the WA Government in consultation with mining companies and environmental consultants. The IBSA portal uses ALA's BioCollect tool, as a centralised public register, improving the sharing of data among stakeholders involved in environmental impact assessments in WA.

The IBSA contains data from more than 450 surveys, representing 180 different proponents. More than half of the surveys have data sets and reports attached that can be freely re-used under a Creative Commons CC BY 3.0 licence. The IBSA program is a valuable resource for researchers, natural resource managers, and government departments, helping to improve understanding of WA's biodiversity and streamlining access to data to make informed decisions about land use and development.

« Ruby Bonnet
(*Cruentomycena viscidocruenta*)
© RogerP CC BY NC



» Honey Possum
(*Tarsipes rostratus*)
© Jenny Thynne CC BY NC

Industry training with the ALA

The ALA has partnered with The Environment Institute of Australia and New Zealand Inc (EIANZ) to deliver targeted training for environmental consultants, government and industry employees. Hosted by ALA experts, these online webinar sessions are designed to better equip industry professionals with an increased understanding of using the ALA for data analysis, as well as providing an overview of taxonomy, naming structures and species profiles. Training sessions are currently hosted on a quarterly basis.

Email office@eianz.org to register for future training sessions.

"The ALA is an invaluable resource for anyone working in the environmental assessment field. It houses a wealth of essential information about biodiversity, which we use regularly in our work to inform decision-making and to develop new products and services."

– Vicki Brady
Head of the Environment Institute
of Australia and New Zealand.



Scan the QR code
to learn more about
about submitting a
dataset to the ALA



For more information
visit: ala.org.au or contact
support@ala.org.au.